

【Press Release: For Immediate Release】

To: General News/ Feature/ Culture and Arts - Assignment Editor/ Editor/ Reporters

Sun Museum presents a new exhibition
Finding Animals 20th-Century Chinese Paintings from the Yitao Collection
Take a look at the lively animals painted by masters

(Hong Kong, 6 October 2022) Sun Museum presents a new exhibition “Finding Animals: 20th-Century Chinese Paintings from the Yitao Collection”, from Oct 7 to Dec 22, 2022. This exhibition features nearly 40 paintings by 10 Chinese painters of the 20th century selected from the Yitao Collection, including Qi Baishi, Ma Tai, Gao Qifeng, Xu Beihong, Ding Yanyong, Zhao Shao’ang, Li Keran, Jao Tsung I, Shi Lu and Wu Hao.

As a unique artistic language, animals in Chinese ink paintings are endowed with different symbolic meanings. For example, deer symbolises “fortune”, fowl is homophonous with the Chinese character for “luck”. The appearance of animals in Chinese paintings is carefully designed. In addition to the overall layout of the paintings, the features and the characters of animals are often the focal point. The paintings in this exhibition feature a variety of animals, including horses, ox, cats, squirrels, eagles, fowl, etc., demonstrating 20th century Chinese ink painters’ breakthroughs from traditional techniques and innovations in animal paintings.

Each painter featured in this exhibition has a distinctive style in animal paintings. Qi Baishi is known for painting shrimps, crabs, birds inspired from folk pastoral. The animals in his work are vivid, conveying a sense of simplicity of rural life. He put emphasis on revealing the essence of the subject rather than its appearance. In “Fish, Prawns and Crabs”, Qi accurately rendered the outlines of the fish, crabs, and prawns, expressing their vitality. At the age of 90, Qi painted “Eagle on Pine Tree”, of 2.5 meters in height, for Luo Longji. The handsome presence of the giant eagle is highlighted with the texture of its feathers, and the realistic portrayal of its eyes. Eagle symbolises “hero”, while pine tree represent longevity, resilience and strength, corresponding to the quality of the eagle. Xu Beihong is well-known for painting horses; his horses are dynamic, energetic, and serene at times. His brushwork is versatile, fusing the techniques of Chinese and Western paintings. His “Eight Wild Horses” demonstrates a great balance between motion and stillness and the horses are lively. He deployed the ink layering effect so that the horses’ mane would appear to be moving along the breeze. He also enhanced the contours of the horses with the use of depth and gradation, characterizing the horses as strong and powerful. Animals’ charisma and characters are amplified with Xu’s use of light and shade. His work “Shared Happiness” demonstrates the “boneless” painting technique and the outlining method to portray the furriness of ducks and the dog.

Ding Yanyong’s painting style traversed the East and the West. He favoured bold lines and relatively flat and unique composition, bringing liveliness and playfulness to his figures and animals. In “Aquarium”, the prawns, fish, and crabs are depicted in a whimsical manner. In “Cat and Bird”, expressive brushwork is applied to capture the interactions of the cat and bird. Li Keran is famous for his distinctive style of painting ox. His work, “Cowherd Playing the Flute”, serves as a good example of Li’s hard-working and docile ox and his use of Western painting techniques – shading



and layering – to reflect the effect of light. Gao Qifeng made use of the “water infusion”, “powder infusion”, and “boneless” painting techniques to create a poetic but realistic representation of the soft texture of the eagles’ feathers in “Eagles and Moon”. Zhao Shao’ang is known for painting flowers and birds and for his outstanding use of colours. He combined sketching and techniques of traditional ink paintings. "Bird in Autumn" illustrates how the simplicity of brushwork and ink could depict an animal at once authentically and poetically.





The exhibition is accompanied by cultural talks, family art workshops, guided tours, and activity sheets for children. Special stickers and postcards inspired by animal paintings will also be made available. For more details, please refer to the museum website and social media platforms.

At the same time, Sun Museum presents an additional new exhibition "Old Hong Kong Cinemas". Through a selection of 34 historical photographs, this exhibition sheds light on theatres which used to stand in different parts of the city, inviting visitors to reminisce about the bygone era.

Sun Museum is located on the 4th floor of SML Tower, 165 Hoi Bun Road, Kwun Tong, Kowloon, Hong Kong. The museum is open from 10 am to 6 pm, Tuesday to Saturday. It is closed on Sundays, Mondays and public holidays. Admission is free.

Photos with captions:

	<p>Photo 1 &1.1 Sun Museum presents a new exhibition “Finding Animals: 20th-Century Chinese Paintings from the Yitao Collection”</p>
	<p>Photo 2 Visitor appreciates the works at the exhibiton “Finding Animals: 20th-Century Chinese Paintings from the Yitao Collection”</p>

	<p>Photo 3 An additional new exhibiton, "Old Hong Kong Cinemas", invites visitors to rediscover cinemas located in the different corners of the city from the past.</p>
	<p>Photo 4 Qi Baishi Eagle on Pine Tree Ink and color on paper 1950</p>
	<p>Photo 4 Xu Beihong Shared Happiness Ink and color on paper 1936</p>
	<p>Photo 5 Gao Qifeng Eagles and Moon Ink and color on paper</p>

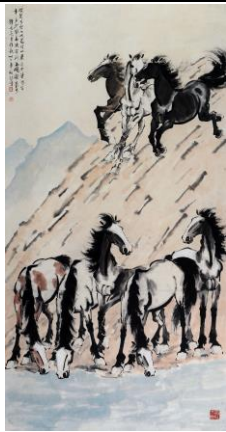


Photo 6
Xu Beihong
Eight Wild Horses
Ink and colour on paper
1943



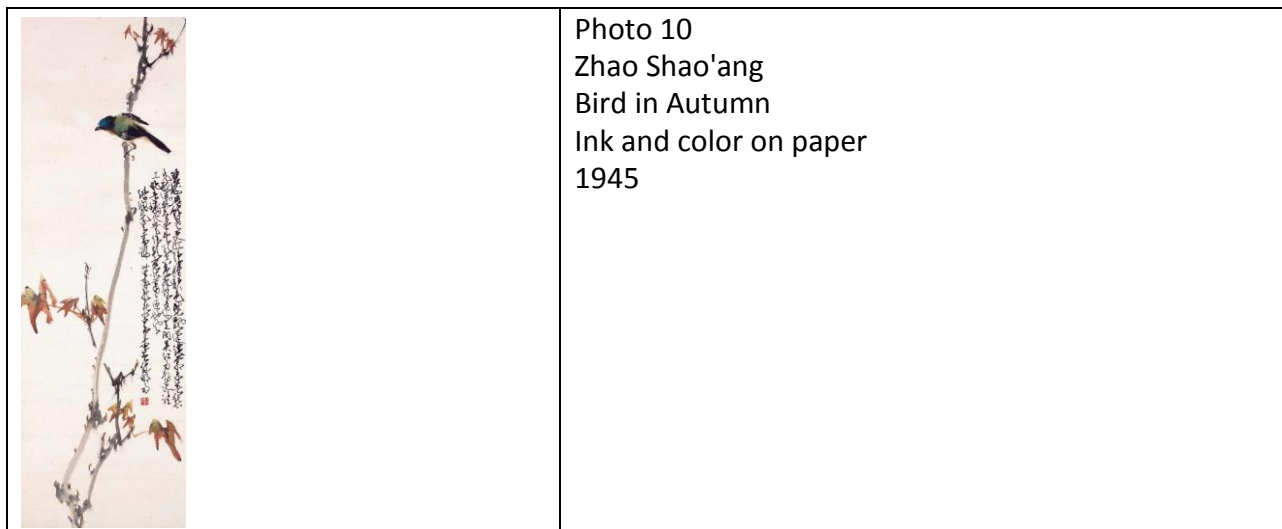
Photo 7
Qi Baishi
Fish, Prawns and Crabs
Ink on paper
1937



Photo 8
Ding Yanyong
Aquarium
Ink on paper
1975



Photo 9
Li Keran
Cowherd Playing the Flute
Ink and color on paper
1972



High resolution photos available at:

<https://drive.google.com/drive/u/2/folders/1Y5-doiPtETpM-bbgN-c9WygqO0u3yrsI>

– END –

This press release is dispatched by **Mention PR Consultants Limited** on behalf of Sun Museum.
 For media enquiries, please contact:

Christy Mo

Tel : 3749 9878 / 9315 0111

Email : christy.mo@mansumpr.com

Michelle Fok

Tel : 3749 9877 / 9702 2246

Email : michelle.fok@mansumpr.com

About Sun Museum

Sun Museum, a non-profit institution established by Simon Suen Foundation, is housed on the 4th floor of SML Tower along the Kwun Tong waterfront (165 Hoi Bun Road) with a total area of 12,500 sq. ft. It aims to foster the development of arts and culture in Hong Kong and China through organising exhibitions, seminars and other educational activities. Mr Yeung Chun Tong is the Director of Sun Museum.

Sun Museum Facebook : <https://www.facebook.com/sunmuseumhk>

Sun Museum Instagram : <https://www.instagram.com/sunmuseumhk/>