

29 April 2021

TO : General News/ Business/ Feature/ Culture and Arts - Assignment Editor/ Editor/ Reporters

**On display at Sun Museum
East-West Fusion of Paintings and Ceramics by Hong Kong Artists**

(*Hong Kong, 29 April 2021*) Sun Museum has launched two new concurrent exhibitions, **The Place: Fantasia of Scenery by Tang Ying Chi** and **The Phase: Hong Kong Contemporary Ceramics**. The exhibitions respectively showcase paintings by renowned Hong Kong female artist Tang Ying Chi, and recent works by 26 members of the Contemporary Ceramic Society (H.K.). Both will run from 30 April to 10 July 2021.

The exhibition **The Place: Fantasia of Scenery by Tang Ying Chi** consists of a total of 30 paintings. 12 of them are from Tang's latest series "The Place" which was created in 2020 during the coronavirus pandemic. In the face of widespread social unease, Tang took inspiration from the pursuit of an ideal world by the ancient Chinese in traditional landscape paintings. In this series of works, she depicts a vast uninhabited place, with sparse familiar urban structures like roads and bridges, in which viewers can envision the world they yearn for. She outlines her mountains and forests with ink and employs different coloured blocks with acrylic. Integrating Chinese and Western painting materials, Tang enriches her nature scenery with the spirit of Chinese landscape painting.

The exhibition also features some of Tang's paintings created with the process of photographic image transference. She portrayed individual figures by tracing digital images of pedestrians projected onto canvas by a projector. By placing these realistic characters in conflicting landscapes depicted with a form of doodling, this approach results in a fascinating visual impact.

The Phase: Hong Kong Contemporary Ceramics, co-organised by the Museum and the Contemporary Ceramic Society (H.K.), showcases 38 sets of ceramic works by 26 Society members. The majority of the works were created exclusively for the exhibition by active ceramists in Hong Kong such as Ray Chan See Kwong, Terence Lee Tze Leung, Jackie Leung Koon Ming, Rosanna Li Wei Han, and Wong May Lee. Each of the exhibits is inspired by a Chinese antique, created in response to contemporary interpretation in the spirit of Chinese traditional craftsmanship.

One of these exhibits is "**Old Letter Papers in New Vividness**", by Solan Chiu. Chiu refers to pictures from the *Ten Bamboo Studio Catalogue of Letter Paper* from the Ming dynasty and paints them on glazed ceramic plates, forming a hazy texture that mimics the effect on *xuan* paper. Another exhibit, "**Tea Treasures**" by Katherine Mahoney, is a white-glazed porcelain tea set decorated with gold lustre. Her work is inspired by the

design of a white-glazed jar from the Northern Song dynasty. Other works include Florence Yim Wai Wai's, "**Mahoraga x Mandrake x Bauhinia x Blakeana**", which blends local features and fantasies taken from Eastern and Western cultures. The piece is inspired by a set of *Mahoraga* figures from the Song dynasty and the myth of Mandrake.

Mr. Yeung Chun Tong, Director of Sun Museum, said, "These two exhibitions are very different in terms of art media, themes and styles. However, when you look closely at the exhibits, it is clear that all the works are influenced by traditional Chinese art. For example, Tang Ying Chi combines characteristics of Chinese landscape paintings with Western painting techniques to create a vibrant ideal world, while the ceramists have taken inspirations from Chinese traditional craftsmanship to revitalise ancient traditions through contemporary innovations."

Sun Museum is housed on the 4th floor of SML Tower, 165 Hoi Bun Road, Kwun Tong, Kowloon, Hong Kong. The museum is open from 10 a.m. to 6 p.m., Tuesday to Saturday. It is closed on Sundays, Mondays and Public Holidays. Admission is free.

Photos with caption:



	<p>Photo 1: Sun Museum is holding two concurrent exhibitions: "The Place: Fantasia of Scenery by Tang Ying Chi" and "The Phase: Hong Kong Contemporary Ceramics". They respectively showcase 30 paintings by Tang Ying Chi, and 38 sets of ceramic works by 26 members of the Contemporary Ceramic Society (H.K.).</p>
	<p>Photo 2: (From left to right) Ms. Chloe Suen, Chair of Simon Suen Foundation, Mr. Chan See Kwong, Chairman of the Contemporary Ceramic Society (H.K.), Dr. Suen Siu Man, Simon, BBS, JP, Founding Chairman of Simon Suen Foundation, Dr. Tang Ying Chi, artist and Mr. Yeung Chun Tong, Director of Sun Museum, at the exhibitions "The Place: Fantasia of Scenery by Tang Ying Chi" and "The Phase: Hong Kong Contemporary Ceramics".</p>



Photo 3:
Visitor enjoying the exhibitions “**The Place: Fantasia of Scenery by Tang Ying Chi**” and “**The Phase: Hong Kong Contemporary Ceramics**”.



Photo 4:
A work from “**The Place: Fantasia of Scenery by Tang Ying Chi**”

Tang Ying Chi
The Place VIII
Mixed media on canvas
2020
80 x 150 cm

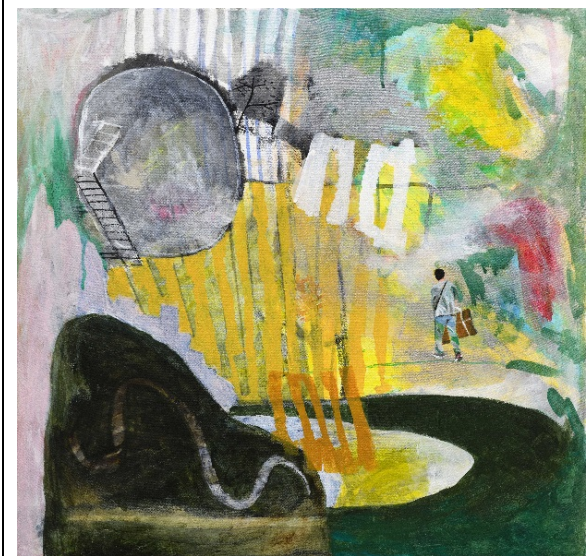


Photo 5:
A work from “**The Place: Fantasia of Scenery by Tang Ying Chi**”

Tang Ying Chi
Landscape 2018 II
Mixed media on canvas
2018
58 x 60 cm



Photo 6:
A piece from “**The Phase: Hong Kong Contemporary Ceramics**”

Ray Chan See Kwong
On Horses
Black-glazed stoneware
2021
L19 W11 H4 cm



Photo 7:
A work from "The Phase: Hong Kong Contemporary Ceramics"

Solan Chiu
Old Letter Papers in New Vividness
Polychrome stoneware
2020
D20 H6 cm



Photo 8:
A work from "The Phase: Hong Kong Contemporary Ceramics"

Katherine Mahoney
Tea Treasures
White-glazed porcelain with gold lustre
2021
Teapot L16 W12 H20 cm
Tea cup D9.5 H5 cm
Vase D8 H12.5 cm



Photo 9:
A work from "The Phase: Hong Kong Contemporary Ceramics"

Florence Yim Wai Wai
Mahoraga x Mandrake x Bauhinia x Blakeana
Earthenware and mixed media
2020
L37 W29 H24 cm

The press release is dispatched by **Mention PR Consultants Limited** on behalf of Sun Museum. For media enquiries, please contact:

Danny CHENG

Tel : 3749 9878 / 9035 4994

Email : danny.cheng@mansumpr.com

Charisse CHAN

Tel : 3749 9878 / 9228 4531

Email : charisse.chan@mansumpr.com

About Tang Ying Chi

Tang Ying Chi, a Hong Kong artist, educator, curator and writer. She obtained her bachelor's degree from Goldsmiths College of the University of London in England and master's and doctoral degrees from Royal Melbourne Institute of Technology University in Australia. She has held over 20 solo exhibitions and participated in various group exhibitions in Hong Kong and overseas. She has obtained numerous awards, such as Professor Mayching Kao Arts Development Fund (2021), People of the Time at the 60th Anniversary of the British Council in Hong Kong (2008), and the Urban Council Fine Arts Award at the Contemporary Hong Kong Art Biennial (1996). Tang has also joined fellowships and artist-in-residence programmes, including Hong Kong Artists Exchange Programme in Gyeongju, Korea, organized by Gyeongju City and Gyeongbuk Newspaper (2017), Visting Fellow at the Hong Kong Design Institute (2016-2017), Artist Residency at Art Quarter Budapest in Hungary (2015) etc.

About Contemporary Ceramic Society (H.K.)

Founded in 1992 by seven ceramic artists, the Contemporary Ceramic Society (HK) is the first and most representative ceramist's organisation in Hong Kong with currently a membership of over 40. As a non-profit organization, the Society aims to promote the development of local contemporary ceramics. Members are all active and experienced ceramists in Hong Kong. Ray Chan See Kwong, the current Chairman of the Society, is a part-time lecturer at the Hong Kong Art School and Hong Kong Baptist University.

About Sun Museum

Sun Museum, a non-profit institution established by Simon Suen Foundation, is housed on the 4th floor of the SML Tower along the Kwun Tong waterfront (165 Hoi Bun Road) with a total area of 12,500 sq. ft. It fosters the development of arts and culture in Hong Kong and China through organizing feature exhibitions, seminars and other educational activities. Mr. Yeung Chun Tong is the Director of Sun Museum.